



Experience the excellence and efficiency



## SANPYA'S STORY - 2015

Two engineers enriched with technical and industrial knowledge in multiple foreign countries founded the company in 2015.

Experience has helped them to foresee and address the needs of industrial pumping and bulk materials handling systems which are very basic, often major part of every industry.

In the beginning, we just want to be a part of industrialization of Myanmar, contribute technical knowledge and experience. Then we got demands to fulfill the gap of providing quality industrial products with reliability and efficiency.

### INDUSTRIES WE SERVED



## BRIDGING BEYOND BORDERS - 2025

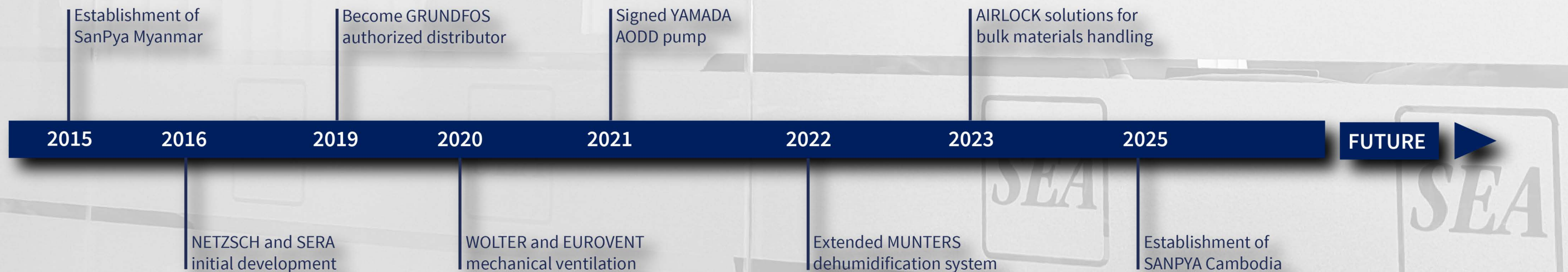
SANPYA Cambodia, marks a new chapter of Year 2025.

— an investment which built on the strong foundation of expertise, to serve the industries across Cambodia, Laos, and Myanmar with innovated industrial solutions from all of our global principals.



Our vision is to empower every possible industrial operations in Mekong region with innovation, efficiency, and reliability. As we move forward, we remain committed to deliver excellence services and forge long lasting relationship across Cambodia, Laos, and Myanmar.

- Managing Director



## Turnkey industrial solution

Industrialization has brought in establishment of factories such as flour, food powder, nutrients, seasoning, chemical, building materials, dry mixing, animal feed mill and a wide variety of bulk solid handling industrial developments.

The background of Sanpya, came from rotating machinery and also rooted with bulk solid handling. With the technical support by principle manufacturer, Sanpya has been offering a complete bulk solid handling solution to those industries since 2020.

Bulk powder handling includes\_

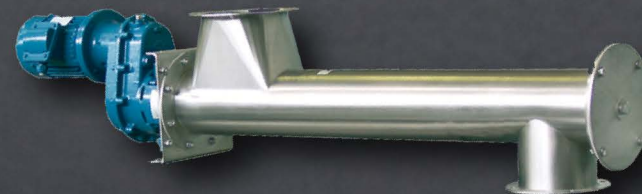
- Raw material arriving and conveyor system
- Mechanical conveying, feeding and metering
- Discharging, flow interception and flow aids
- Dust filtration and pneumatic conveying
- Pressure and Level monitoring
- Mixing
- Packaging
- End of line conveyor system



## Easy clean components

From minerals to medicine productions, AIRLOCK's easy clean rotary valves and diverter valves are critical components of the process. It also offer BFM Fittings, pneumatic conveying food grade pipe and accessories, sight glass for various industries of food, dairy, pharmaceutical and chemical, and essentially, a-must magnet separation to filter finest metal particles from the process before packaging.

AIRLOCK products are internationally recognized, meet the highest standards and expectations of customers with certification of ex-proof, ISO, EHEDG- European hygienic engineering and design group, and USDA.



# Full range of powder handling equipment

# Powder Handling

INDUSTRIES

- Building Materials
- Asphalt
  - Cement
  - Dry Mixing

- Feed and Food
- Animal Feed
  - Flour Mill
  - Pharmaceuticals

- Chemical and Plastic
- Daily Use and Cosmetics
  - Paint and Fertilizer
  - Plastics Processing

- Heavy Industries
- Lime, Gypsum
  - Mining and Crushing
  - Fly Ash Handling

## MECHANICAL FEEDING & CONVEYING



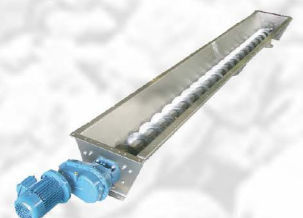
Carbon Steel Tubular Screw Conveyors & Feeders



Carbon Steel Trough Screw Conveyors & Feeders



Stainless Steel Tubular Screw Conveyors & Feeders

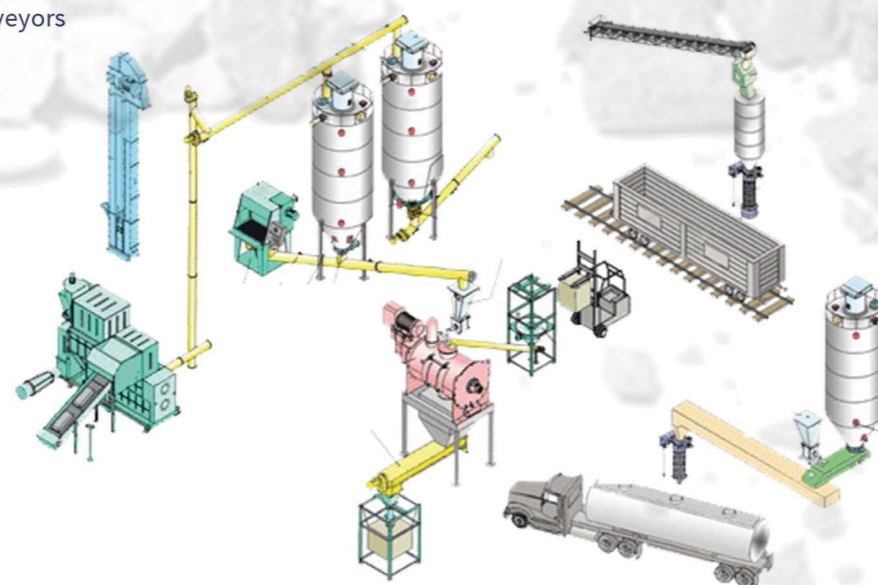


Stainless Steel Trough Screw Conveyors & Feeders



Vertical Screw Conveyors

Lifting height ≤ 20m



## DUST FILTRATION



Silo Venting Filters  
Dust emission <math><1\text{mg}/\text{Nm}^3</math>  
Maintenance height ≤ 1100mm



Weight Hopper Venting Filters  
High filtration efficiency  
Small footprint



Flanged Round Dust Collectors  
Advanced dust filtration technology  
Low dust emission

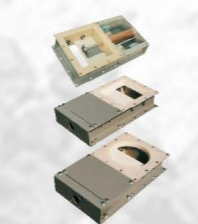


Polygonal Dust Collectors  
Filter surface 3~54m<sup>2</sup>  
Dust emission <math><1\text{mg}/\text{Nm}^3</math>

## FLOW INTERCEPTION



Butterfly Valves  
Flow easy to replace components



Slide Valves  
Polymer-coated frame  
Small number of spare parts



Diverter Flap Valves  
Elastic SINT flap ensuring material flow is diverted without particle breakdown, grinding or jamming

## MICROFEEDING & METERING



Drop Through Rotary Valves  
 $Q=2\sim 20$  liters per revolution  
Atex zone 20/22 available



Drop Through Rotary Valves  
 $Q_{nom}=5\sim 80$  liters per revolution  
Atex zone 20/22 available



Micro-Batch Feeders with Agitators  
 $Q=0.05\sim 66$  l/min  
High accuracy feeding

## UNLOADING & DISCHARGING



Bin Activators  
Ø= 400~3000 mm



Lump Breakers  
Economical Lump breaking  
Cutting tools appropriately designed and sized for friable lumps



Tanker Loading Bellows  
Capacity ≤ 440 m<sup>3</sup>/h  
Stroke length ≤ 6m

## LEVEL & PRESSURE MONITORING



Bin Level Indicators ILT  
All contact parts in stainless steel  
High or low process temperature options



Continuous Level Measurement  
High accurately easy to understand  
high-tech measurement  
Appropriate for all types of bulk solids



Pressure Relief Valves  
Lightweight design  
Easy to fit and maintain

## Full range of powder handling equipment

INDUSTRIES

Building Materials  
 • Asphalt  
 • Cement  
 • Dry Mixing

Feed and Food  
 • Animal Feed  
 • Flour Mill  
 • Pharmaceuticals

Chemical and Plastic  
 • Daily Use and Cosmetics  
 • Paint and Fertilizer  
 • Plastics Processing

Heavy Industries  
 • Lime, Gypsum  
 • Mining and Crushing  
 • Fly Ash Handling

### PNEUMATIC CONVEYING



Pinch Valves  
 Passage diameter VM: 13~200mm  
 Passage diameter VMM: 40~200 mm



Flap Diverter Valves  
 Smooth internal surface (no dead spots)  
 Lightweight and compact overall dimensions



Diverter Valves for Pneumatic Conveying  
 Compact overall dimensions  
 Maintenance friendly



Blow Through Rotary Valves  
 $Q_{max} = 5\sim 80$  litres per revolution  
 High, feeding accuracy

### BAG FILLING & EMPTYING



FIBC Big Bag Dischargers  
 Dust free, economical discharging even with compacted powders.



Manual Bag Openers  
 Built-in fan operated, air jet-cleaned, maintenance-friendly dust collector.



FIBC Filling Systems RBB  
 Max FIBC size 1100×1100×2000 mm  
 Dust-free filling even with compacted powders

### MIXING & CONDITIONING



Batch-Type Ploughshare Mixers  
 Short time high quality mix  
 Excellent reproducibility of batches



Batch-Type Single Shaft Mixers with Bomb-Bay Discharge  
 Material residue inside the mixing drum of less than 0.1%



Batch-Type Ribbon Blenders  
 Gentle damage-free product treatment  
 Excellent reproducibility of batches

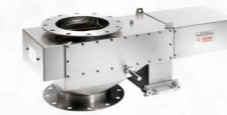


Dust Conditioners  
 Easy to retrofit  
 Self-Cleaning  
 Quick return on investment



Laboratory Mixers  
 Quick mixing results  
 Excellent reproducibility of batches

### ECLIPSE MAGNETICS MAGNETIC DETECTION



Auto-Shuttle Magnetic Detector  
 Automated cleaning magnet separator for 24/7 processing



Pneumag Magnetic Detector  
 Removes ferrous and para-magnetic contamination effectively from pneumatic process lines



Housed Easy Clean Grid Magnetic Detector  
 Easy clean, high intensity magnetic separator grids or separator grates



Magnetic Separation (Circular, Grid, Easy Clean Grid)  
 Removes ferrous particles from powders and granulates



High-Intensity Magnetic Liquid Traps  
 Ideal for installing on pressurized transfer lines, providing protection against ferrous metal contamination

### Airlock EASY CLEAN COMPONENTS



Easy Clean Rotary Valve  
 No longer the need of torque wrench for clearance setting. Available in 6 sizes covering a capacity range of the rotor from approximately 2.5 to 58 liter per revolution at 100% filling.



Flexible Connector  
 With the distinctive snap-in, flexible connector and spigot system that eliminates the problems associated with old-style hose clamp connectors.

### FLOW AIDS & MOTOR VIBRATOR



Electric Motovibrator  
 Suitable for indoor and outdoor use  
 Silos and hoppers of any material and capacity from 200 to 10,000 kg



Pneumatic Vibrator  
 Industrially mass-produced items



Pneumatic Hammer  
 Ideal for hopper cleaning, bridging  
 Excellent price-performance ratio



Rotary Vibrator  
 Rotary vibrators for conveying, compacting and flowing  
 Industrially mass-produced items



Flow Aids (Vibrating Bin Aerator, Aeration Pad)  
 Compactible with foods and chemicals  
 Low air consumption (0.2 bar pressure)



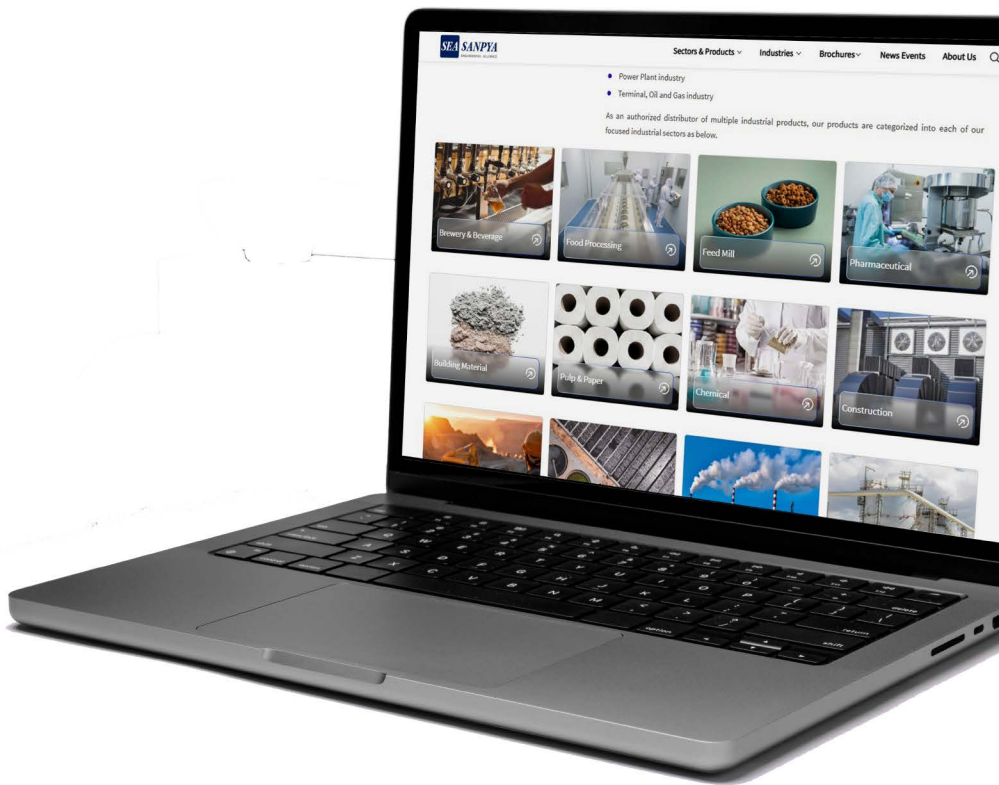
Compression Couplings  
 Pipe and tube size 12 mm to 1220 mm.  
 Available in Galvanized Steel, Stainless Steel and Aluminum.



In-Line Sight Glasses  
 Provide a 360° full-view window to observe material flowing through pneumatic or vacuum conveying lines. Clear acrylic view segment is standard glass.

Experience more products  
information and industrial  
applications on our website.

Visit at :  
[www.sanpya-engineering.com](http://www.sanpya-engineering.com)



Myanmar Office  
No.99, (2-D), 99 Condominium,  
Dhammazeti Road, Kamayut Tsp,  
Yangon, 11041,  
Myanmar.

Cambodia Office  
#E-11E0, St. Borey LJ 137K, Chak  
Chruk, Samraong Kraom Sangkat,  
Pur SenChey Khan, Phnom Penh,  
Cambodia.

Contact Us :  
+95 9 402 684 876  
+855 95 292 058  
[contact@sanpya-engineering.com](mailto:contact@sanpya-engineering.com)